



Tape Template Instructions

Please read all instructions thoroughly before proceeding. For assistance call 1-888-286-3115 (US & Canada)

You Will Need:

- 1 piece of Handiwrap® or other brand cellophane about 3 feet long
- 1 red magic marker
- Scissors
- Comb or brush
- Mirror
- Chair
- Transparent tape

Apply Cellophane

1. Using a damp comb or brush, comb back any hair off the forehead so it does not obstruct the view of the subjects hairline.
2. Holding the cellophane near each end, place it over top of head centering the top of subject's head under the cellophane.



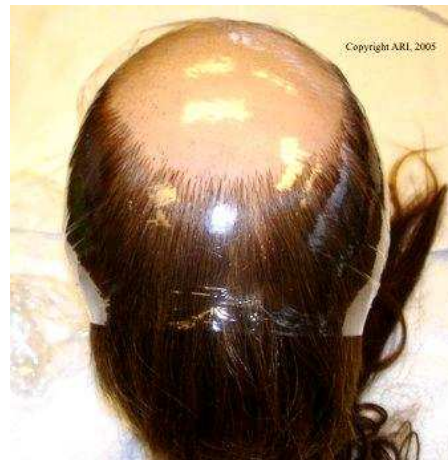
3. Pull and stretch the cellophane downward against the top of the head. Apply slight pressure while twisting the ends of the cellophane so that the front and back edges pull close to the scalp.



4. Apply more downward pressure to the cellophane so it tightly wraps around the top of the head, being careful not to rip the cellophane.
5. To maintain the pressure of the cellophane against the scalp, either give the two ends of the cellophane to the subject to hold tightly through the molding process, or tie the ends together under the chin, being careful not to release the tight wrap around the top of the head. You are now ready to design your hair system.



6. After the cellophane is tied, confirm that all areas of the cellophane on the top area are firm to the scalp.



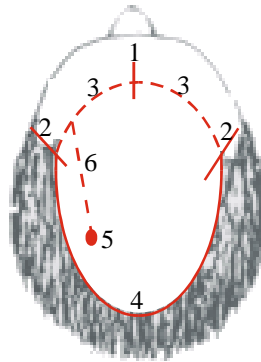
7. If any areas (usually the front) are loose, use a piece of tape to flatten the are to the scalp, as below.



Designing & Drawing the Hair System

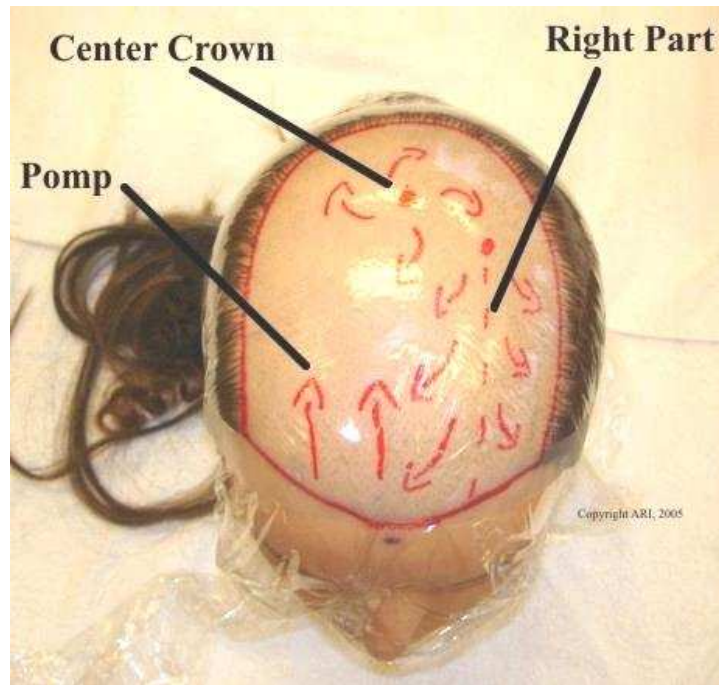
Refer to the drawing below.

1. Using the marker, draw a short vertical line in the center of the forehead and in the area of the hairline. Use the subject's nose as a guide for centering.
2. Draw two more vertical lines tracing the subject's hairline on the temples.



3. Starting from the center mark, draw an arc from center to temple recession area representing one side of the new hairline. Repeat the same process for the other side of the hairline. Stop. Examine the hairline you have drawn in the mirror and without the mirror and make any corrections to the shape or position. If you need to erase the red line at any time this can be done using rubbing alcohol, or any hairspray containing alcohol, and a dry cloth.
4. Once the hairline is complete, make markings on the back and sides for the edge of system. Join the markings with one solid line around the sides and back of the scalp.
5. Mark a crown (if desired) by drawing a large dot in the appropriate position.
6. If you wish, draw a line from the forehead back to the crown area representing where you would like a part or break in the system.
 - If you are designing a hair system for a hair bonding or clips attachment, the sides of the hair system should overlap the subject's existing hair. For an adhesive tape or other scalp attachment, the hair system should stop at the edge of the subject's healthy hair.

The picture below shows a completed drawing on a template for 3 different hair styles. You will only use 1, of course. For a free style or part anywhere style, no extra lines are needed. For a pompadour style, draw three lines straight back from the hairline.



Applying Tape

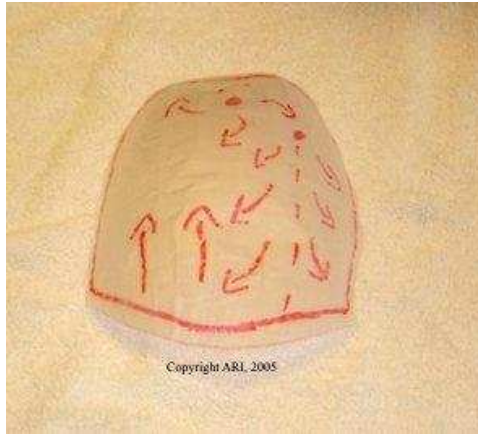
1. You are now ready to create the contour of your hair system. Start at the front hairline, and apply pieces of tape from side to side snug to the scalp. They should overlap each other slightly, and extend beyond all the marker lines.



2. Once the entire area from front to back has been completed, use the same procedure working from side to side.



3. Once all of the tape is applied, remove the cellophane from the subjects scalp. Cut the template out by following the outside marker line. It is a good idea to cut slightly proud of the outside line as the template sometimes shrinks slightly when removed.



4. After the template is cut out, place it on the subjects scalp again to check for accurate sizing. Adjust the size of the template if necessary.

Taking Hair Samples

Take 1 to 3 hair samples depending on your needs. If your hair is longer than 1.5 inches it may be lighter on the ends than it is at the root. Many people prefer the top of the head to be slightly lighter than the sides or back. If so, snip a good size hair sample from the end of the hair. Tape the hair sample to a piece of paper and label it with the appropriate area ie: "top & front".

If you would like the sides darker than the top or require a grey percentage in the temples, take a sample from the temple area, again labeling the sample "temples". If you want more grey than is in the sample, specify a percentage ie: "+10% grey in temples."

If you require one color all over, simply take one sample and tape it to a piece of paper. Single samples do require labels. The one sample will be used all over.

Please provide large samples as this will help guarantee a more accurate color match.

These instructions are copyright by Arthur Ranney Inc. O/A DHR and Freedom Hair Systems and may not be reproduced in any way without permission.